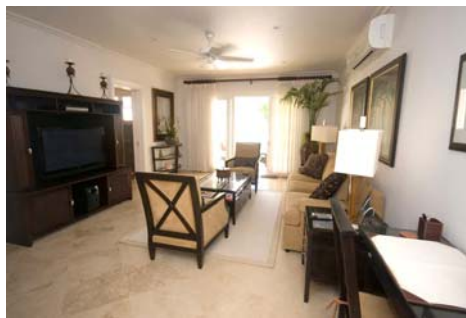


## 'Jus Chillin' – Barbados



Jus Chillin Mullins Barbados is located within a gated community of houses for rent in Barbados, which has 24 hour security. This 4 bedroom Barbados townhouse style villa has been finished to the highest standard and offers air conditioning throughout, ceiling fans, marble bathrooms and floors and a superb fully equipped Miele kitchen with granite worktops.



All 4 bedrooms are beautifully furnished with either king size beds or twin beds, they have built in wardrobes and have a safe. The Master Suite is on the top floor and has dressing area, separate bath/shower room and sea view. Three of the bedrooms have a private terrace which overlooks the pool area.





Outside there is a covered dining and seating area which leads onto a private walled garden and patio area. From the garden is access to the large free form pool which has a cascading waterfall and has sun-loungers, tables, chairs and parasols for guests staying at 4 of the townhouses to use. There is also a communal pool, patio area with bar, the Indulgence Spa and gym on site too.



The beautiful beach is just a short two minute walk away and guests also have access to the Royal Westmoreland private members beach club and restaurant which is also a very close by and offers sun beds, towels and parasols along with waiter service.



Jus Chillin is a 5 minute drive to Speightstown with its many waterfront cafes, the fish market, shops and art galleries or 10 minutes south of the island towards Holetown where there is duty free shopping, the chattel house village shops and a selection of restaurants. For the golfers Sandy Lane and Royal Westmoreland are within a 15 minute drive away too.

### **Amenities**

- 110 volts
- ADSL
- Wireless broadband connection
- Hairdryers
- Flat screen TV
- Cable
- DVD music system
- Telephone
- Wine cooler
- Fridge freezer/ice maker
- Microwave
- Dishwasher

**Staff :** House Manager, House Keeper. A cook is available on request at an extra cost.

**Location :** 5 minute drive to Speightstown - 10 minutes drive to Holetown - Sandy Lane and Royal Westmoreland are within a 15 minute drive away too.

